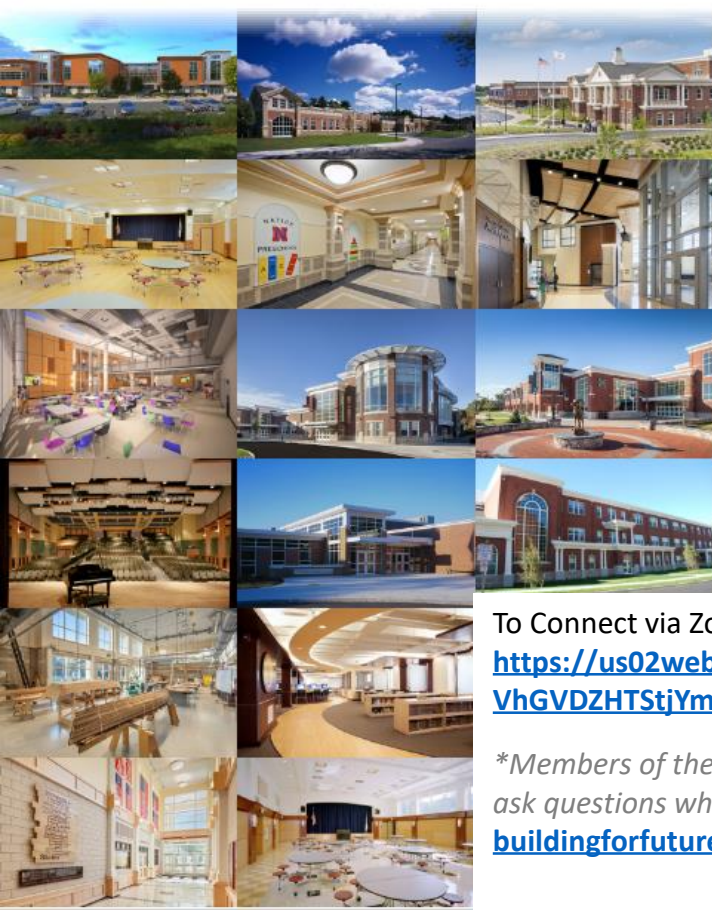


Design Watertown



Elementary Schools Project

Hill International, Inc.

Ai3 Architects, LLC

To Connect via Zoom*:

Passcode: **899084**

<https://us02web.zoom.us/j/85782901747?pwd=UnF1UVhGVdZHTStjYmZiRnkwOGF6UT09>

**Members of the Public: Please use the Q&A button to ask questions when appropriate or email questions to:*
buildingforfuture@watertown-ma.gov

Agenda – November 16, 2022

- **Call to Order**
- **Approval of Meeting Minutes**
 - Elementary School Project – October 19th & November 2nd
- **Review and Approval of:**
 - Elementary Schools Monthly Invoices
- **Executive Summary**
- **Elementary School Projects Update – Lowell Elementary School**
 - Interior Finish/Color Selection Review
 - Furniture, Fixtures and Equipment Selection Review
- **Elementary School Projects Update – Hosmer Elementary School**
 - Revised Landscape Plan at PV locations on Boylston Street
 - Revised Landscape Plan at PV locations on Hancock Street
- **Elementary School - Questions / Comments**

Watertown Public Schools Building Committee

Call to Order

Watertown Public Schools Building Committee

Approvals

- ▶ Meeting Minutes
 - Elementary School meeting minutes for October 19, 2022,
And November 2, 2022
- ▶ Invoices
 - Elementary Schools Project (October 2022)

Approvals

Summary of Invoices Elementary Schools Project

For work completed during October 2022

Vendor	Project	Invoice Date	Invoice Number	Invoice Amount
Hill International	Elementary Schools	11/10/22	42	\$89,810.00
Ai3 Architects	Elementary Schools	10/31/22	0056B-1610.00	\$37,883.27
Ai3 Architects	Elementary Schools	10/31/22	0046E-1610.00	\$87,389.35
Ai3 Architects	Elementary Schools	10/31/22	0038R-1610.00	\$2,833.29
Brait Builders	Elementary Schools	10/31/22	Application #29	\$807,752.50
CTA Construction Managers	Elementary Schools	10/31/22	Application #8	\$2,518,392.43
Ridgeline Energy Analytics	Elementary Schools	10/04/22	1478	\$1,530.00
UTS	Elementary Schools	9/16/22&10/14/22	102417 & 102194	\$10,522.00
Colliers	Elementary Schools	9/30/22&10/31/22	789393 & 799249	\$17,347.41
			Total	\$3,573,460.25

Watertown Public Schools Building Committee

Executive Summary



Project Accomplishments from Last Month

Cuniff Elementary School
 Miscellaneous punch list items substantially completed
Hosmer Elementary School
 Playground areas substantially completed between Chauncy Street and Hosmer Elementary School
 Landscaping and hardscapes substantially completed between Chauncy Street and Hosmer Elementary School
Lowell Elementary School
 Zone 1 addition AVB substantially completed
 Zone 2 addition exterior framing and sheathing substantially completed while AVB ongoing
 Zone 1 and Zone 2 roof area prep work for roofing substantially completed

Projected Major Tasks This Month

Cuniff Elementary School
 Miscellaneous punch list items remaining
Hosmer Elementary School
 Start ballfield drainage system and remaining PV foundations and supports along Boylston Street
 Complete concrete pads for bathroom facility, battery storage and remaining dugout
Lowell Elementary School
 Roofing in Zone 1 and Zone 2 additions and existing roof in Zone 1
 Brick installation in Zone 1 & Zone 2

Schedule Summary - Upcoming Milestones

	Scheduled Start	Scheduled Finish	Status	Comments
Hosmer Elementary School				
Playground and site work in front of the Hosmer	7/15/22	11/15/22	Sub. Complete	Landscaping
Building punch list remaining	5/16/22	11/15/22	Sub. Complete	Cabinet Issues
Site work for Ballfields and PV structures	5/16/22	5/15/23	Ongoing	No Sod in 2022
Lowell Elementary School				
Interior wall framing, all floors - Zone 2	10/15/22	11/30/22	Ongoing	
Sub floors on level 1 - Zone 1	10/15/22	11/30/22	Ongoing	
Site utility work	4/18/22	12/30/22	Ongoing	
Zone 1 and Zone 2 Roofing	11/14/22	12/30/22	Scheduled	
Brick Exterior - Zone 1	11/7/22	11/30/22	Ongoing	
Brick Exterior - Zone 2	11/28/22	12/30/22	Scheduled	
Cuniff Elementary School				
Soil and plantings in bio-retention area	10/15/22	11/30/22	Ongoing	
Establish grass areas - front and back	10/15/22	11/30/22	Ongoing	

Hosmer - Progress Photos



Cuniff - Progress Photos



Scope changes from the Original Scope

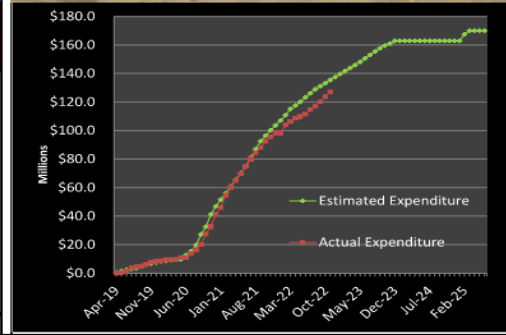
CUNIFF & HOSMER ELEMENTARY SCHOOLS
 Brait Builders - CO #1 - #14 - \$6,049,292.77

LOWELL ELEMENTARY SCHOOL
 CTA - CO#1 Approved \$324,126.42 May 18,2022
 CTA - CO#2 Approved \$70,320.87 August 17, 2022
 CTA - CO#3 Approved \$625,848.69 September 21, 2022
 CTA - CO#4 Approved \$668,016.34 November 2, 2022

Lowell - Progress Photos



Description	BUDGET			COST				CASH FLOW	
	Baseline	Budget	Authorized Changes	Approved Budget	Committed Costs	Uncommitted Costs	Forecast Costs	Total Project Costs	Expenditures to Date
Construction	\$ 136,000,000	\$ 4,667,355	\$ 140,667,355	\$ 140,667,355	\$ -	\$ 2,158,000	\$ 142,825,355	\$ 107,478,649	\$ 35,346,706
Design Services	\$ 13,819,615	\$ 456,676	\$ 14,276,291	\$ 14,276,291	\$ 0	\$ -	\$ 14,276,291	\$ 13,657,555	\$ 618,736
Administrative	\$ 7,530,385	\$ (553,520)	\$ 6,976,865	\$ 5,411,988	\$ 1,564,877	\$ 1,546,390	\$ 8,523,255	\$ 4,402,383	\$ 4,120,872
FF&E	\$ 4,150,000	\$ 225,000	\$ 4,375,000	\$ 1,870,539	\$ 2,504,461	\$ -	\$ 4,375,000	\$ 1,870,267	\$ 2,504,733
SUBTOTAL	\$ 161,500,000	\$ 4,795,511	\$ 166,295,511	\$ 162,226,174	\$ 4,069,338	\$ 3,704,390	\$ 169,999,901	\$ 127,408,854	\$ 42,591,047
Construction Contingency (Hard Cost)	\$ 7,400,000	\$ (5,712,355)	\$ 1,687,645	\$ -	\$ 1,687,645	\$ (2,158,000)	\$ (470,355)	\$ -	\$ (470,355)
Owner's Contingency - COVID-19	\$ -	\$ -	\$ -	\$ -	\$ -	\$ -	\$ -	\$ -	\$ -
Owner's Contingency (Soft Cost)	\$ 1,100,000	\$ 916,844	\$ 2,016,844	\$ -	\$ 2,016,844	\$ (1,546,390)	\$ 470,454	\$ -	\$ 470,454
SUBTOTAL	\$ 8,500,000	\$ (4,795,511)	\$ 3,704,489	\$ -	\$ 3,704,489	\$ (3,704,390)	\$ 99	\$ -	\$ 99
PROJECT TOTAL	\$ 170,000,000	\$ -	\$ 170,000,000	\$ 162,226,174	\$ 7,773,827	\$ -	\$ 170,000,000	\$ 127,408,854	\$ 42,591,146



Executive Summary

Cunniff Elementary School

- Miscellaneous punch list items

Hosmer Elementary School

- Miscellaneous punch list items
- Ballfield Construction
- PV foundations, supports and panels

Lowell Elementary School

- Brick exterior at Zone 1 addition
- Complete Sheathing and AVB at Zone 2 addition
- Start brick exterior at Zone 2 addition
- Continue re-roofing Zone 1 area (new asphalt shingles)
- Roofing Zone 1 and Zone 2 addition areas
- Continue rough mechanical ductwork & piping, rough plumbing, rough electrical and fire protection in Zones 1 & 2
- Presentation of Revised Cafeteria, Kitchen and Lobby areas during the December SBC Meeting

Watertown Public Schools Building Committee

Lowell Elementary School Update

Interior Finishes

J. R. Lowell Elementary: Goals for Finishes

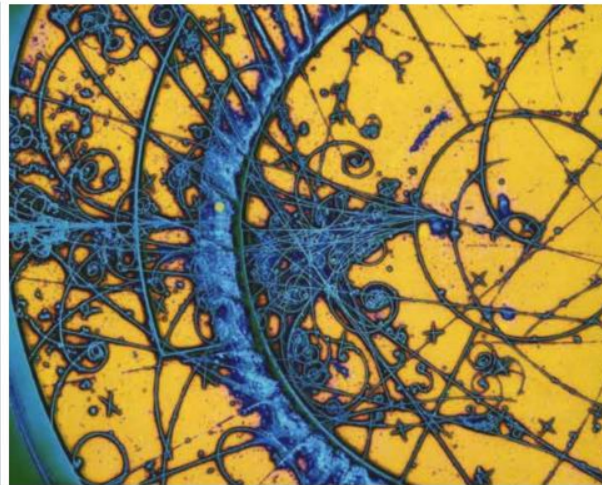
- 
- A bright, modern school hallway with a circular light fixture, lockers, and children playing. The space is open and airy, with large windows and a clean, minimalist design. Children are seen playing and interacting in the space, and a woman is walking through the hallway. The overall atmosphere is one of a safe, functional, and inviting educational environment.
- School spirit + pride
 - Highlight academic neighborhoods
 - Celebrate growth + advancement
 - Wayfinding + sense of place
 - Generous use of calm, timeless neutrals
 - Judicious use of color for identity and customization of spaces, and to create a fun and positive atmosphere
 - Strategic placement of lighter colors and finishes to support daylighting and light level sensors = energy savings

J. R. Lowell Elementary: Inspiration

- Natural phenomenon and motifs are beautiful, inspiring, and reassuring
- Some custom graphics will focus on school identity and branding, the school logo, mascot, and the school colors
- Imagery from nature will also be incorporated into custom graphics in high visibility areas, and used to inspire floor patterns throughout the school
- *Note: custom graphics are still in design; images are representative of inspiration*



The four seasons



Subatomic particles in a bubble chamber



Interior Finishes

J. R. Lowell Elementary: Learning Commons

Finishes Legend ←



Paint



Casework



Laminates



Linoleum



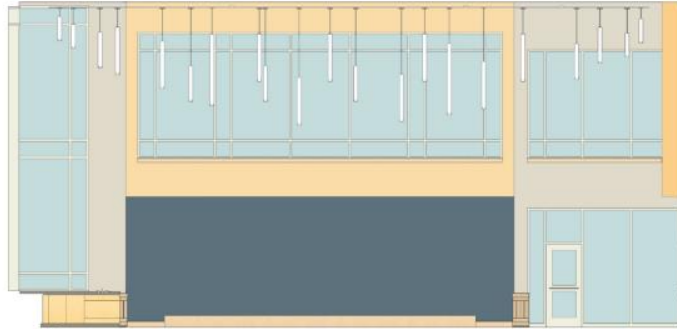
Carpet



Rubber Base



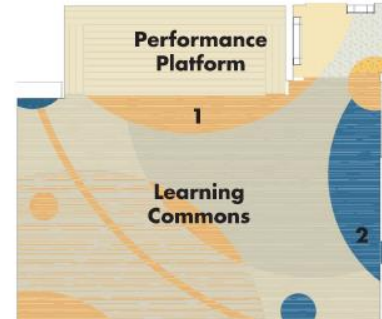
Frames & Doors



① Interior Elevation - Platform with Projection Screen



② Interior Elevation



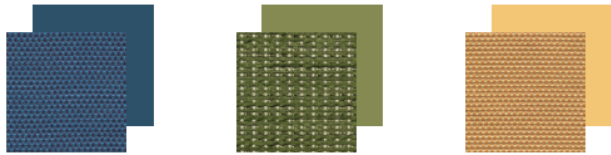
Flooring Layout



Learning Commons

J. R. Lowell Elementary: Media Center

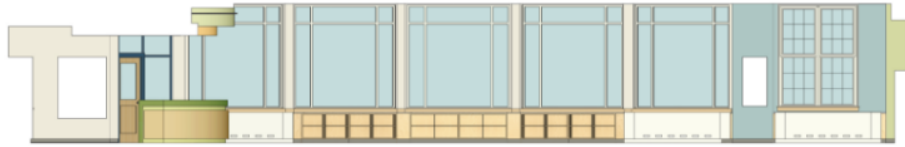
Finishes Legend



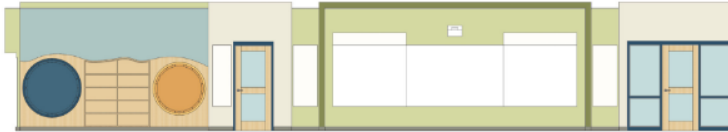
Rubber Base



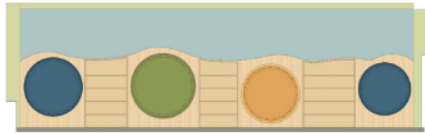
Frames, Doors, and Casework



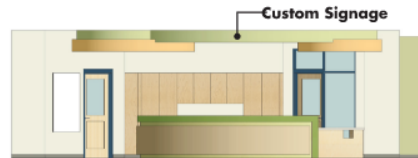
1 Interior Elevation



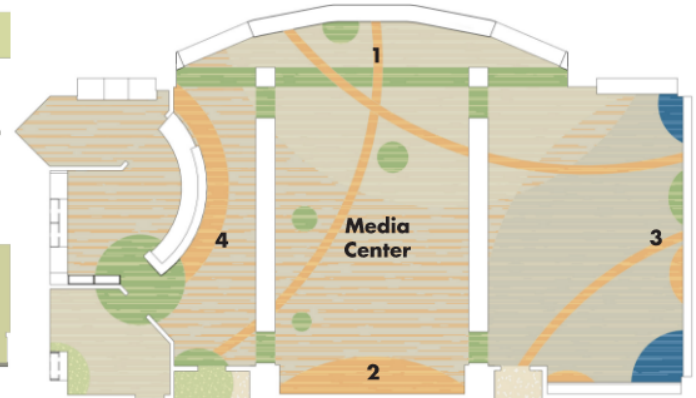
2 Interior Elevation - Teaching Wall



3 Interior Elevation - Reading Nooks



4 Interior Elevation - Circulation Desk



Flooring Layout

J. R. Lowell Elementary: Corridors

Finishes Legend



Paint



Laminate



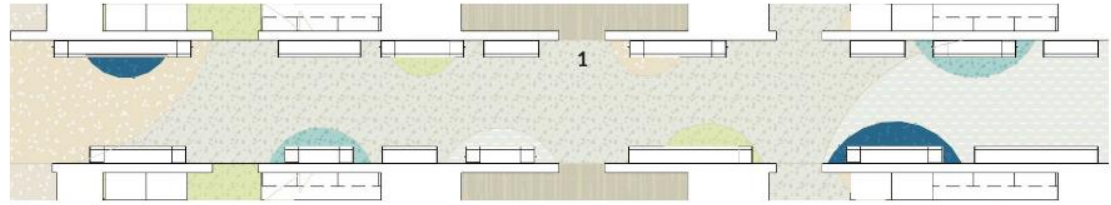
Linoleum



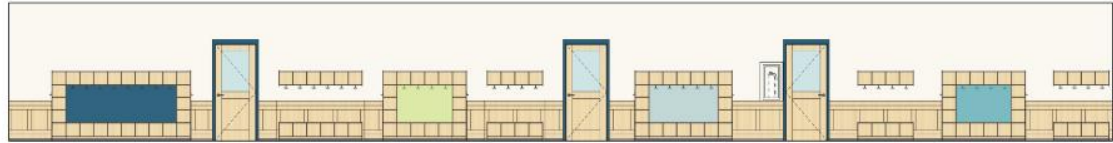
Rubber Base



Frames, Doors, and Cubbies



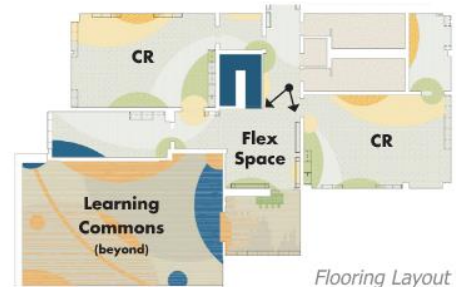
Flooring Layout



1 Interior Elevation



Interior Perspective



Flooring Layout



Academic Corridor

J. R. Lowell Elementary: Corridor at Main Entry

Finishes Legend



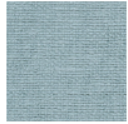
Paint



Vinyl Wallcovering



Panel Trim & Wainscoting



Tack Boards



Linoleum



Tile @ Fountain



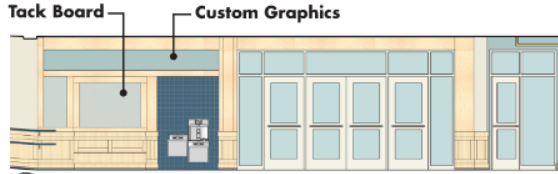
Frames



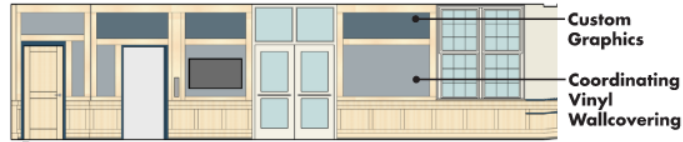
Rubber Base



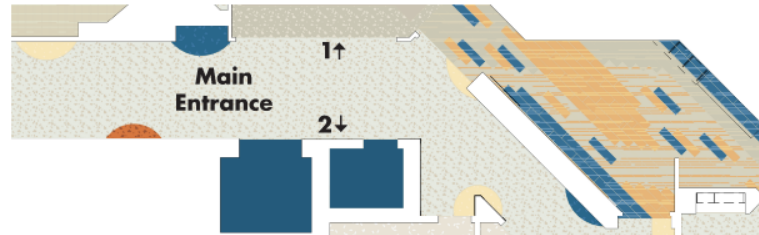
Doors



1 Interior Elevation - Main Entrance



2 Interior Elevation - Main Lobby to Central Stair and Elevator

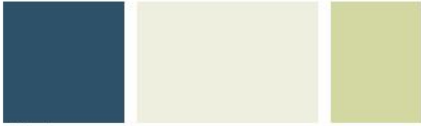


Flooring Layout

Interior Finishes

J. R. Lowell Elementary: Typical Classroom - 2nd Grade

Finishes Legend ←



Paint



Casework

Laminate

Tackboards

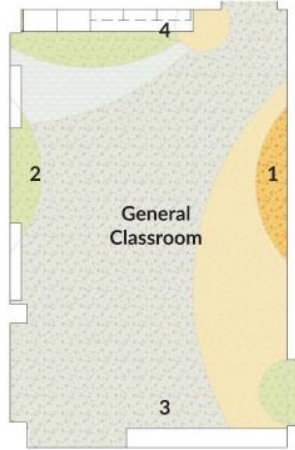


Linoleum

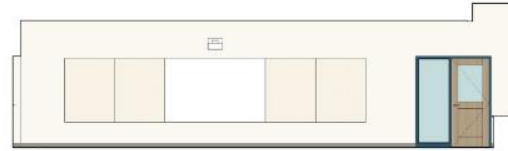


Rubber Base

Frames & Doors



Flooring Layout



② Interior Elevation - teaching wall



④ Interior Elevation - storage



① Interior Elevation



③ Interior Elevation

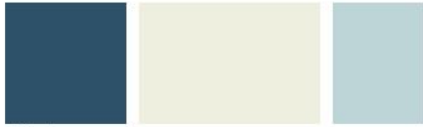


Interior
Perspective



J. R. Lowell Elementary: Typical Classroom - 4th Grade

Finishes Legend



Paint



Casework

Laminate

Tackboards



Linoleum

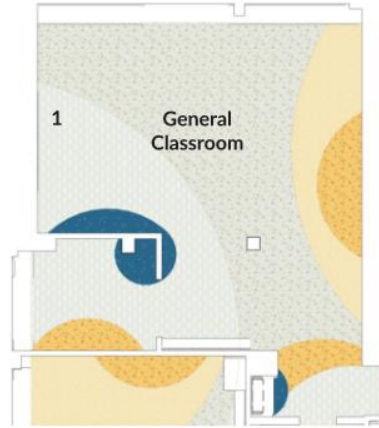


Rubber Base



Rubber Base

Frames & Doors



Flooring Layout



① Interior Elevation - accent wall with storage

Accent Colors by Grade Level

Kindergarten
"spectrum"



1st
Grade
"water"



2nd
Grade
"garden"



3rd
Grade
"forest"



4th
Grade
"school spirit"



5th
Grade
"mountain"



J. R. Lowell Elementary: Music Classroom

Finishes Legend



Paint



Carpet



Linoleum



Acoustic Treatments



Rubber Base Tackboards



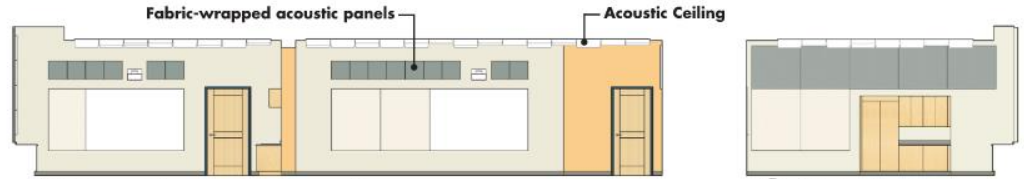
Acoustic Ceiling Felt



Frames & Doors



Casework Laminate



① Interior Elevation - teaching wall

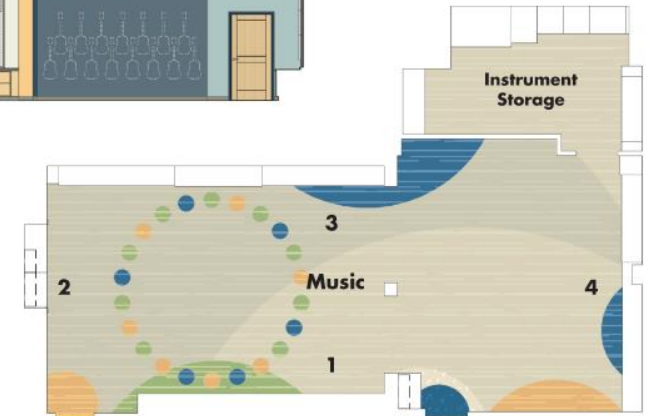
② Interior Elevation



③ Interior Elevation - storage



④ Interior Elevation



Flooring Layout

J. R. Lowell Elementary: Art Classroom

Finishes Legend



Paint



Casework



Tackboards



Acoustic Felt
Ceiling Clouds



Linoleum



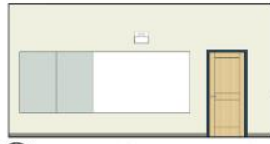
Rubber Base



Frames & Doors



Epoxy Countertops



① Interior Elevation - teaching wall



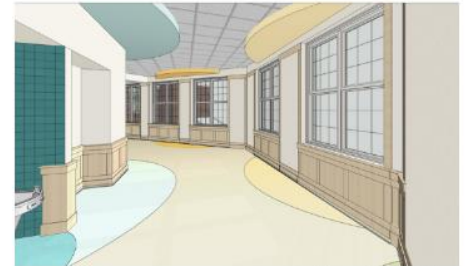
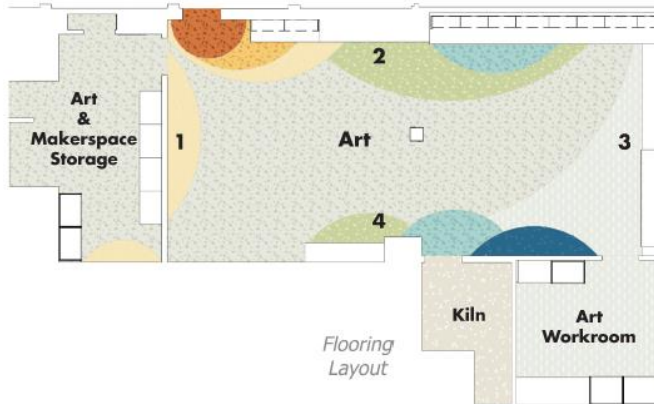
② Interior Elevation - storage



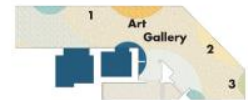
③ Interior Elevation



④ Interior Elevation



Corridor at Art Gallery



Flooring Layout

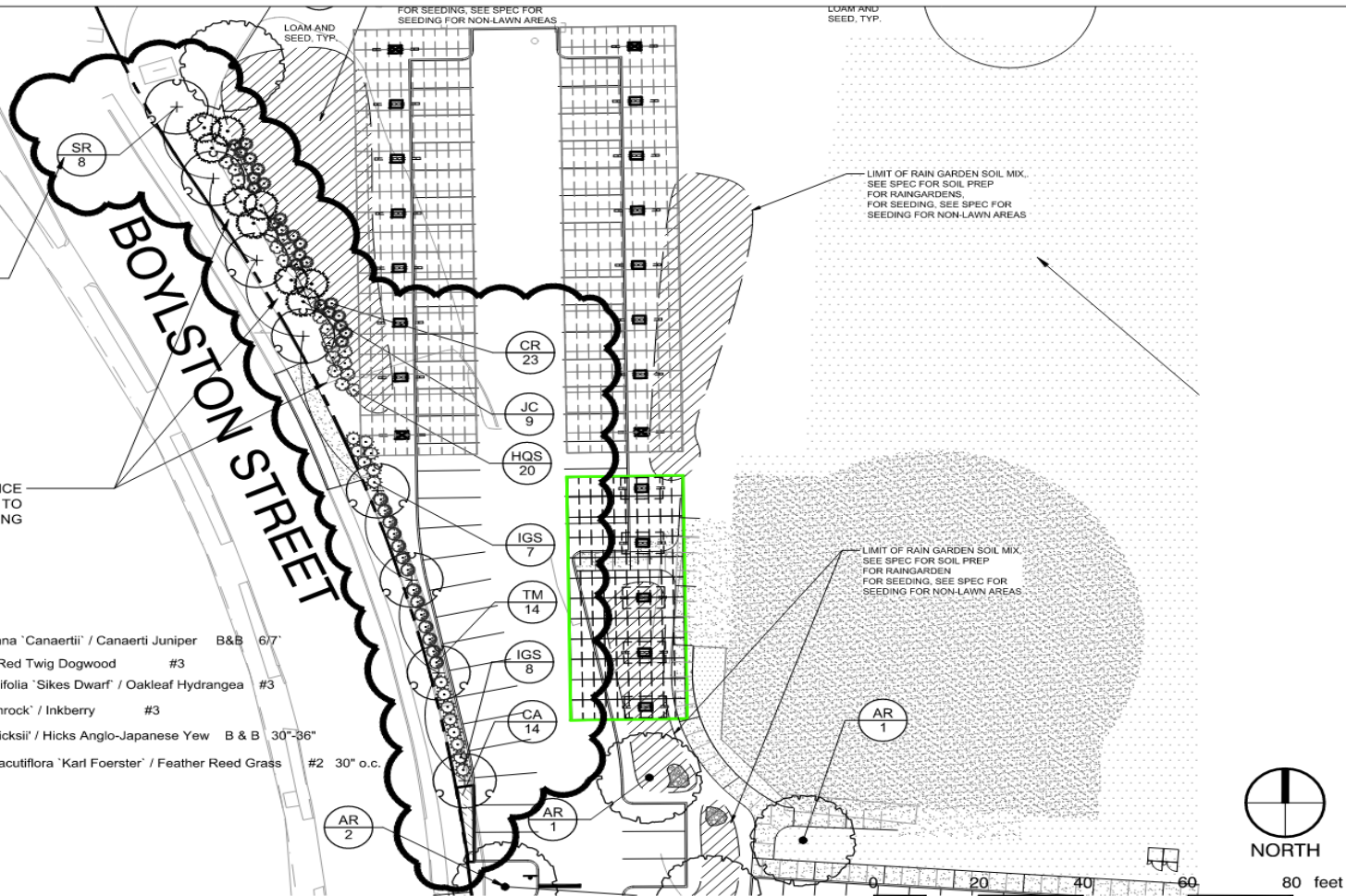
Watertown Public Schools Building Committee

Hosmer Elementary School Update

TREES MOVED TO INSIDE OF PATH

6' MIN. DISTANCE FROM EDGE OF WALK TO BED FOR MOWING

JC	9	Juniperus virginiana 'Canaertii' / Canaerti Juniper	B & B	6/7'
CR	23	Cornus sericea / Red Twig Dogwood	#3	
HQS	20	Hydrangea quercifolia 'Sikes Dwarf' / Oakleaf Hydrangea	#3	
IGS	15	Ilex glabra 'Shamrock' / Inkberry	#3	
TM	14	Taxus x media 'Hicksii' / Hicks Anglo-Japanese Yew	B & B	30"-36"
CA	14	Calamagrostis x acutiflora 'Karl Foerster' / Feather Reed Grass	#2	30" o.c.



1" = 20'

HOSMER ELEMENTARY SCHOOL

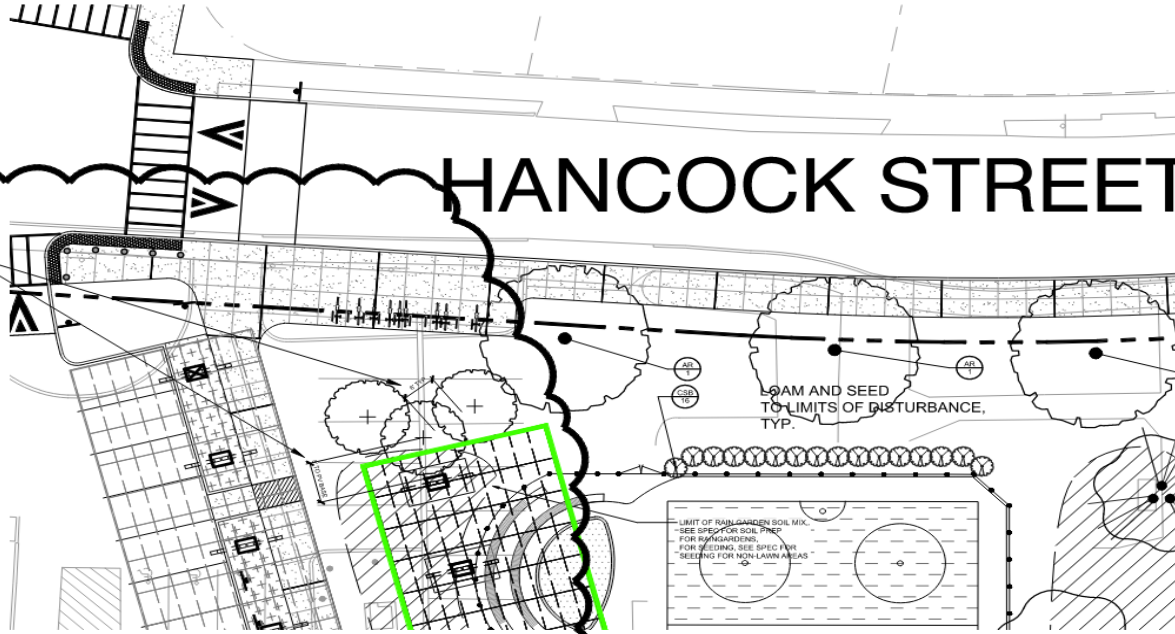
1 Concord Rd
Waltham, MA
02127



528 Boston Post Road
Weyland, MA 01778
TEL: 908.956.0790
FAX: 908.956.0791

PROJECT NO.: K1001.1
DATE: October 25, 2022
REF: DWG - LPI.0

HSKL-030



HANCOCK STREET

PLANT 8' AWAY FROM BASE OF PV PANEL
AND 6" BETWEEN MULCH RINGS



HV 3 HAMEMALIS VERNALIS / OZARK WITCHHAZEL B&B 6/7
SPECIMEN TO BE LOW BRANCHED

LOAM AND SEED
TO LIMITS OF DISTURBANCE,
TYP.

LIMIT OF RAIN GARDEN SOIL MIX.
-SEE SPEC FOR SOIL PHER.
FOR B&GARDENS.
FOR SEEDING, SEE SPEC FOR
SEEING FOR NON-LAWN AREAS



NORTH

0 20 40 60 80 feet



1" = 20'



FEATHER REED GRASS (CA)



INKBERRY (IGS)



HYDRANGEA (HQS)



RED TWIG DOGWOOD (CR)



JUNIPER (JC)



JAPANESE TREE LILAC (SR)

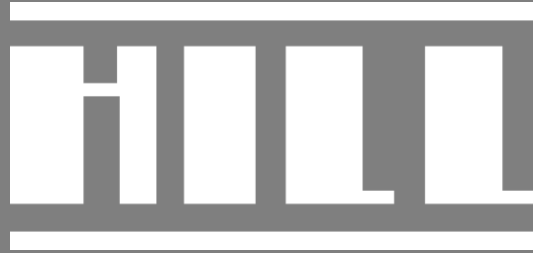


TAXUS (TM)

Watertown Public Schools Building Committee

Questions / Comments

Those members of the public joining via Zoom, please use the Q&A button at this time to ask questions or email questions to: buildingforfuture@watertown-ma.gov



www.hillintl.com